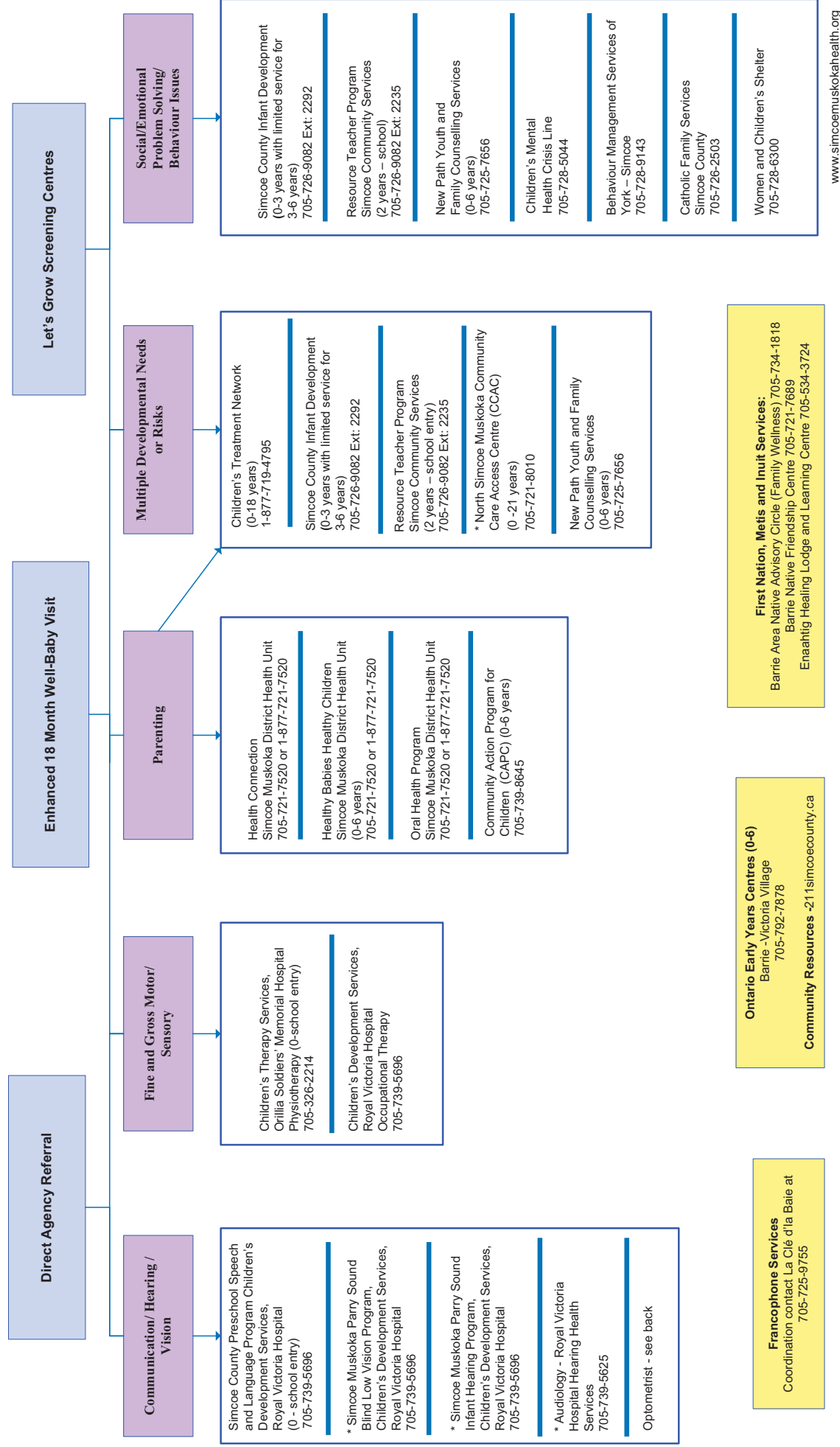


Early Intervention Services Referral Information/Barrie



* Physician referral required. Refer to the Children's Aid Society of the County of Simcoe (CAS) if child protection issues are present or disclosed 705-726-6587.

Early Intervention Services Referral/Barrie

AGENCY/SERVICE	DESCRIPTION OF SERVICE
Audiology	Hearing assessment (all ages).
Behaviour Management Services of York-Simcoe	Provides behavioural service to individuals who have a developmental disability with a significant cognitive delay.
Barrie Native Friendship Centre (AHBHC and Aboriginal Family Support)	Programming meets the needs of the First Nation, Metis and Inuit community through culturally based programs. Develop and enhance healthy social skills, motor skills and cognitive development. Address the physical, mental, emotional and spiritual well being of individuals, families and communities.
Barrie Area Native Advisory Circle (Family Wellness)	Beebminot Family Healing and Wellness program assists families in reducing poverty through education, skill development and personal growth activities. These are culturally based services which also include parent resourcing and Parent Circles in partnership with the Biinoojinsauk Child Care Centres.
Catholic Family Services Simcoe County	Counselling for individuals, couples and families for marital issues, child management concerns, family breakdown, and stress. Fees geared to income.
Children's Aid Society	Investigation of child welfare concerns or risk of concerns, protection, 0 - 16 yrs.
Children's Mental Health Crisis Line	Children and their parents, immediate telephone response to deescalate crisis, may visit to site of crisis and/or provide follow up services
Children's Development Services Royal Victoria Hospital Occupational Therapy	Infants and preschoolers with developmental concerns and/or at risk populations. Assessment, treatment and consultation. Specialized clinics, public awareness, prevention and early identification activities.
Children's Treatment Network	Serving Simcoe County and York Region for children with multiple disabilities. Links Health care, education, recreation, social and community services through one point of contact for a single coordinated plan of care.
Children's Therapy Services Orillia Soldiers' Memorial Hospital Physiotherapy	Infants and preschoolers with developmental concerns and/or at risk populations. Assessment, treatment and consultation. Specialized clinics, public awareness, prevention and early identification activities.
North Simcoe Muskoka Community Care Access Centre (CCAC)	For children with medical and/or medically complex needs. Services also provided to 3- 4yr old children with rehabilitative and/or sensory needs entering the school system onwards.
Community Action Program for Children (CAPC)	Teen/young parent support. Low income families. Food and Nutrition supports. Variety of free programs and supports for parents and their children.
Enaahdig Healing Lodge and Learning Centre	Offers day and residential program to persons of Aboriginal ancestry. Program to support individuals in a traditional and holistic manner. Day programs include counselling services, youth groups, crafting circles, seasonal ceremonies and traditional teachings.
Oral Health Program Simcoe Muskoka District Health Unit	Children In Need of Treatment (CINOT) ext: 8804. Urgent dental concerns for children 0 to 18 th birthday years. Healthy Smiles Ontario (HSO) ext: 8810. Preventative services, based on family income. Other inquiries via general number.
Healthy Babies Healthy Children Program Simcoe Muskoka District Health Unit	Home visits with a Public Health Nurse and Family Home Visitors for parenting support, service coordination, and linking to community resources. Intake line to all health unit services.
Health Connection Simcoe Muskoka District Health Unit	Health information, support and referrals to community resources from a Public Health Nurse. Information also available via internet and e-mail at www.simcoehealth.org Intake line to all health unit services.
Simcoe County Infant Development Simcoe Community Services	Serving infants in Simcoe County. Home visiting, developmental assessment, service coordination.
New Path Youth and Family Counselling Services	Social-emotional and/or behavioural concerns. In-home service provided to parents and children. Parenting programs and social skills group programs for children.
Ontario Early Years Centre	Provide parents with information, education & resources to support them in their parenting role. Offers a variety of age appropriate learning opportunities for children 0-6. All programs provided are free.
Simcoe County Preschool Speech and Language Program Children's Development Services Royal Victoria Hospital	Infants and preschoolers with developmental concerns and/or at risk populations. Assessment, treatment and consultation. Specialized clinics; public awareness, prevention, early identification and education activities.
Resource Teacher Program Simcoe Community Services	Developmental concerns/behaviour/at risk. Support to children in inclusive preschool programs. Individual work with parent(s) and children.
Optometrist	Recommended children should have their vision checked at 6 months, 3 years and yearly. The cost is covered by OHIP until age 19 years and parents can self refer.
Simcoe Muskoka Parry Sound Blind Low Vision Early Intervention Program Children's Development Services Royal Victoria Hospital	Program provides assessment and intervention services through an Early Childhood Vision Consultant for infants and preschool children who are Blind or Low Vision as diagnosed by an ophthalmologist.
Simcoe Muskoka Parry Sound Infant Hearing Program, Children's Development Services-Royal Victoria Hospital	The Simcoe Muskoka Parry Sound Infant Hearing Program provides Universal Newborn Hearing Screening, specialized infant audiological assessment, high risk monitoring, communication development services and brief family support for those who meet the eligibility criteria.
Women and Children's Shelter	Offers crisis counselling, emergency transportation support, referrals to other community services, and legal and housing support to abused women and children. Shelter: 705-728-6300 * Outreach Services: 705 721-9977 Crisis 1-800-461-1716
www.211simcoecounty.ca	A searchable database providing easy access to community, social, health, and related government services in Simcoe County.